

THE DEMERI

ELEVATIONS



ELEVATION 1

(Shown with optional black windows)



ELEVATION 2

(Shown with optional black windows)



ELEVATION 3

(Shown with optional 3 car garage)



Approx. 3,287 - 3,786 sq. ft.
4 Bedrooms, 3.5 Bathrooms
with a 2-Car Garage

THE DEMERI

ELEVATIONS



ELEVATION 4

(Shown with optional black windows)



ELEVATION 5

(Shown with optional side load garage, metal roof, and black windows)



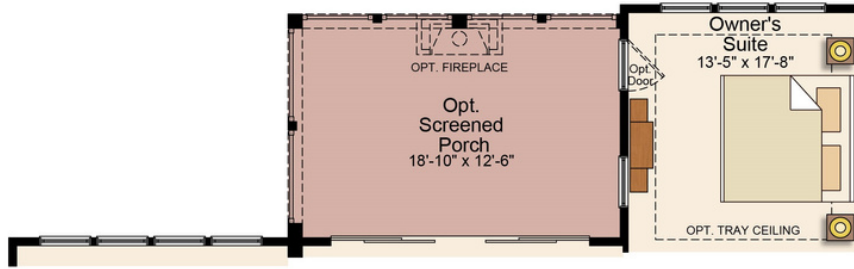
ELEVATION 6



Approx. 3,287 - 3,786 sq. ft.
4 Bedrooms, 3.5 Bathrooms
with a 2-Car Garage

THE DEMERI

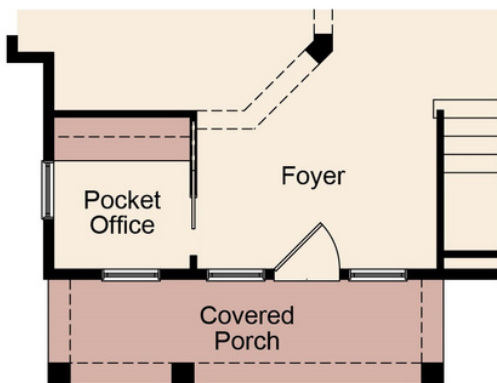
FIRST FLOOR OPTS.



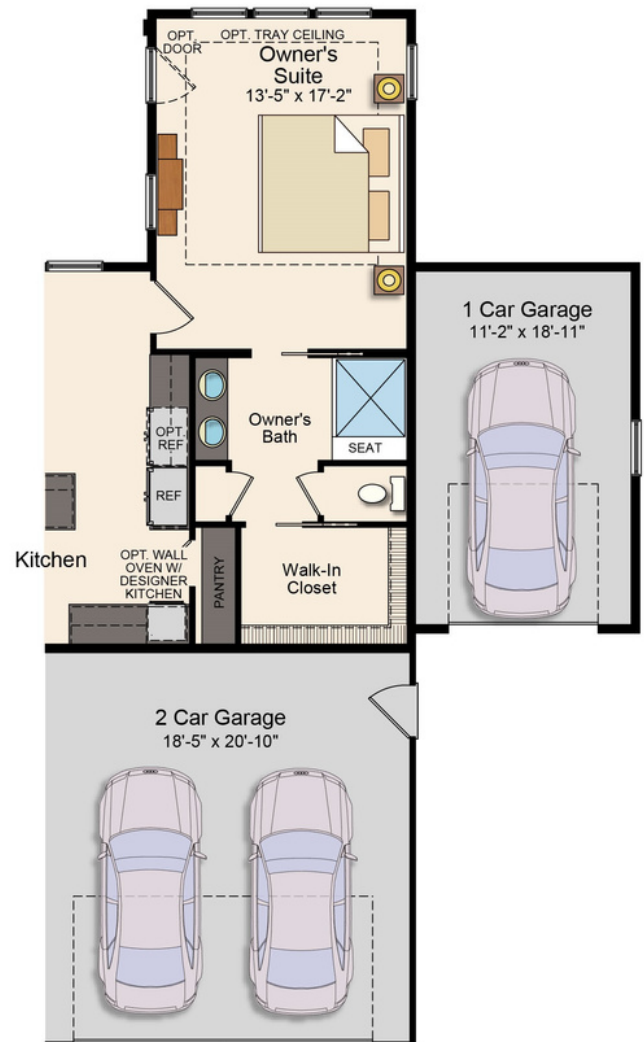
OPT. SCREENED PORCH WITH 15' SLIDER



OPT. HOME OFFICE



OPT. POCKET OFFICE

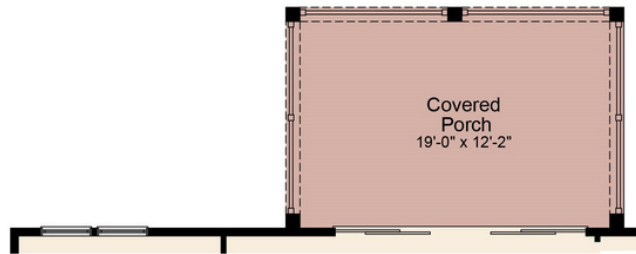


OPT. 3 CAR GARAGE

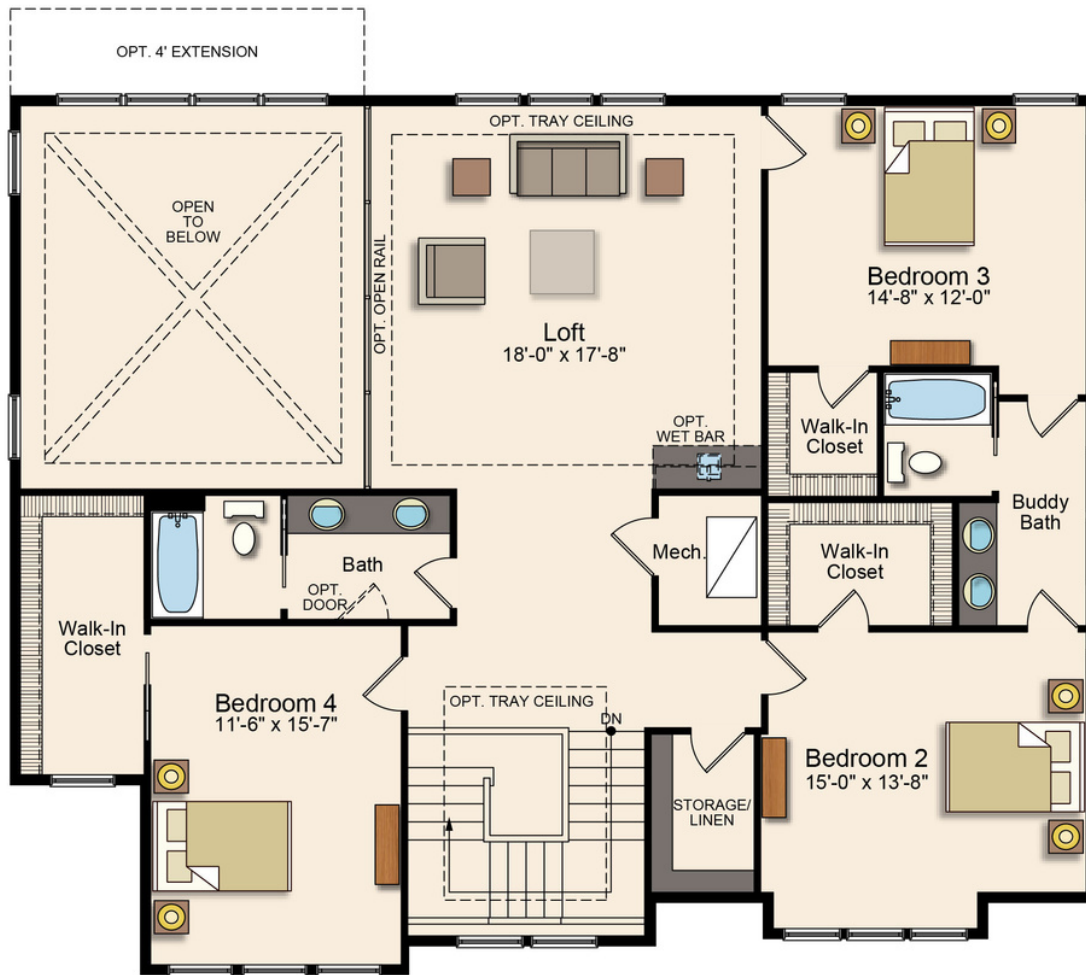
Approx. 3,287 - 3,786 sq. ft.
4 Bedrooms, 3.5 Bathrooms
with a 2-Car Garage

THE DEMERI

SECOND FLOOR



OPT. 2-STORY PORCH



SECOND FLOOR

Approx. 3,287 - 3,786 sq. ft.
4 Bedrooms, 3.5 Bathrooms
with a 2-Car Garage

*Community, plans, pricing and amenity details and dimensions are approximate and subject to change. Illustrations are artist concepts and may vary from the actual product being built, as well as from community to community. Builder specifications are subject to revision or substitution of equivalent materials without notice. We reserve the right to substitute equipment, material, appliances, and brand names with items of equal or higher, in our sole opinion, value. Contact the community manager for the latest information.

THE DEMERI

INTERIOR RENDERINGS



Approx. 3,287 - 3,786 sq. ft.
4 Bedrooms, 3.5 Bathrooms
with a 2-Car Garage

*Community, plans, pricing and amenity details and dimensions are approximate and subject to change. Illustrations are artist concepts and may vary from the actual product being built, as well as from community to community. Builder specifications are subject to revision or substitution of equivalent materials without notice. We reserve the right to substitute equipment, material, appliances, and brand names with items of equal or higher, in our sole opinion, value. Contact the community manager for the latest information.